

Conference Archive

Best Beginning Design Projects, Volume 2
University of Texas at Austin
January, 1984
Editor: Michael Jordan

Article Index

Element *M. Stephen Zoepski*

Space, Form and Sequence *Sandra Davis Lakeman*

Analysis of An Existing Structure and
Figure/Ground *John P. White*

Spatial Apotheosis for Apollo and Dionysus and A
Shadow Gallery *Alan R. Cook*

Personal Dry Space and Supporting Device *Phoebe
Wall, et al*

Collection of Lessons *H. Gordon Brooks, et al*

Chick, Chick, Chick: Something to Crow About
Linda Lee Nelson

An Artist's Studio *John A. Nelson*

A Home for a Family of Five Musical Instruments
Lorna McNeur

Quadraparte *R. P. Swallow*

A Systematic Building Analysis and A Lakefront
House *Michael J. Andrejasich, Dave Chasco*

An Ecowatch Outpost *Robert E. McConnell*

A Monestary *Martin G. Gundersen, Jr.*

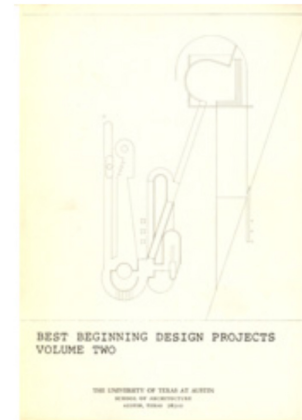
A Cash Bazaar, Troy *David Bell*

50' x 50' Studio Residence in Urban Block *Marleen
Kay Davis, et al*

The Economic Envelope Game *Don Hanlon*

A House *Dragan Mrdja*

A Bridge *Ognjen Djurovic*



The theme of the year was Home. Discussions consisted of redefinitions of Home relative to dwelling, inhabitation, and existence. Bachelard, Poetics of Space, was the text to which we referred on thoughts on Home.

The project was "Home for a Family of Five Musical Instruments". The rooms were to be inspired and designed from the essential qualities of the instruments. Upon completion of design, the instrument should no longer be literally present in the room.

Five instruments were chosen by each student and analyzed relative to structure and character.

PROGRAM

INTENT:

Home for a family of five musical instruments.

REQUIREMENTS:

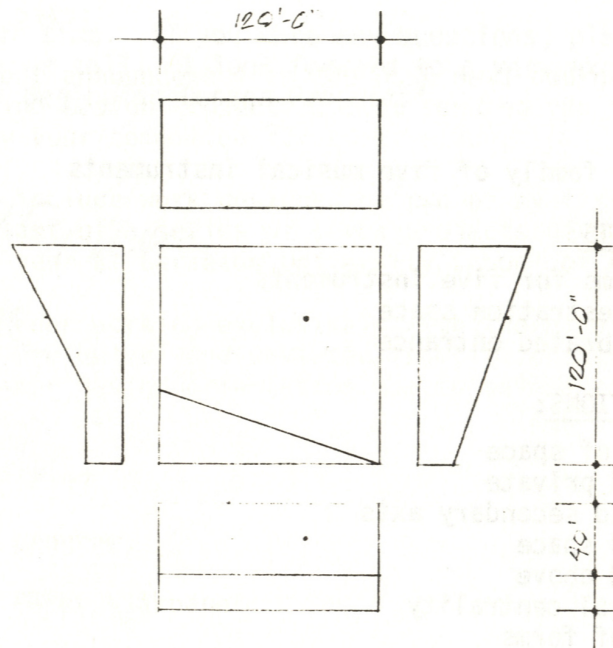
- . Five rooms for five instruments
- . One orchestration space
- . One celebrated entrance

CONSIDERATIONS:

Hierarchy of space
Public and private
Primary and secondary axis
Celebrated space
In, on and above
Asymmetrical centrality
Dialogue of forms
Fragmentation

THE SITE:

- . Theoretical hill which meets a body of water.
- . The land may be considered as a singular private island or as a singular site on a large body of land.
- . Entrance may occur from water or land.
- . The slope is a hyperbolic paraboloid.
- . The site is 120' x 120'.
- . The slope falls from 40' high to 0', at which point it meets a body of water.
- . There is a point marked on the site which must be interpreted as an element appropriate to each individual's design.



PRESENTATION REQUIREMENTS:

- Two plans
- Two sections
- Four elevations
- One axonometric
- One model

The two projects include work designed by two of my first year students as the last of a series of seven projects given during the 1982-83 academic year at Carleton University School of Architecture.

The students had been working exclusively with the nine square grid project prior to project #7 and deviated from it in this project in order to consider design orientation due to unique conditions of the given site.

