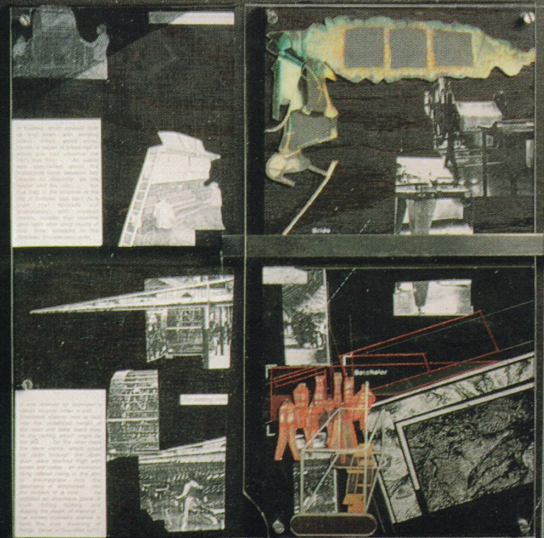
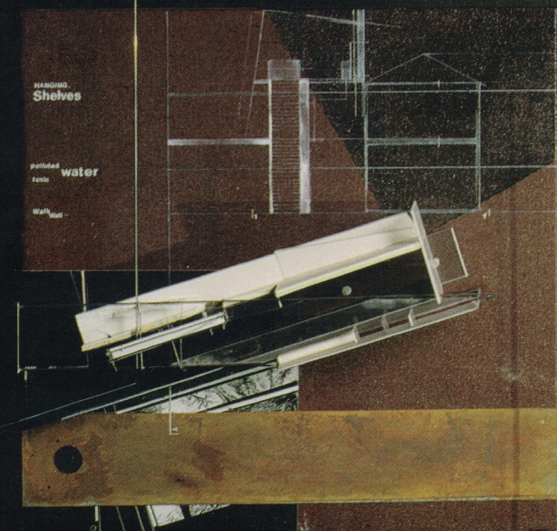
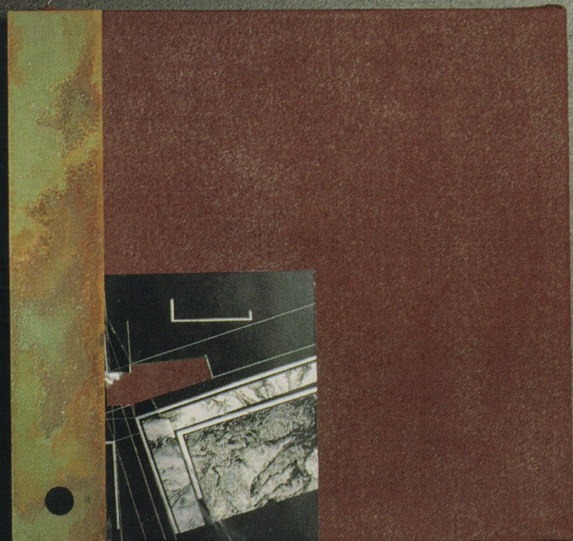
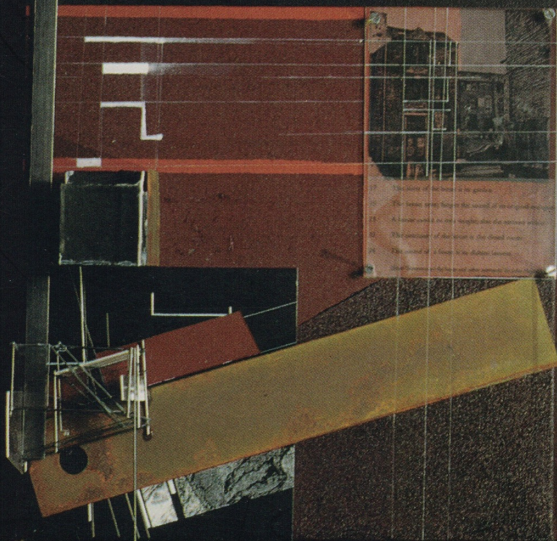


University of Cambridge Department of Architecture Annual Exhibition 1996



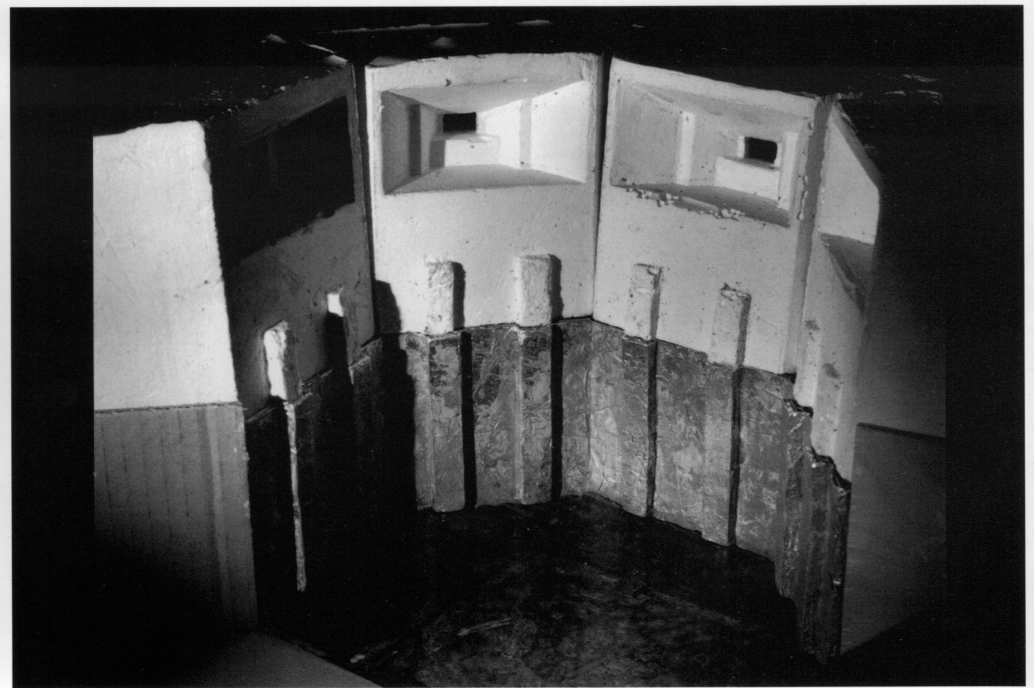
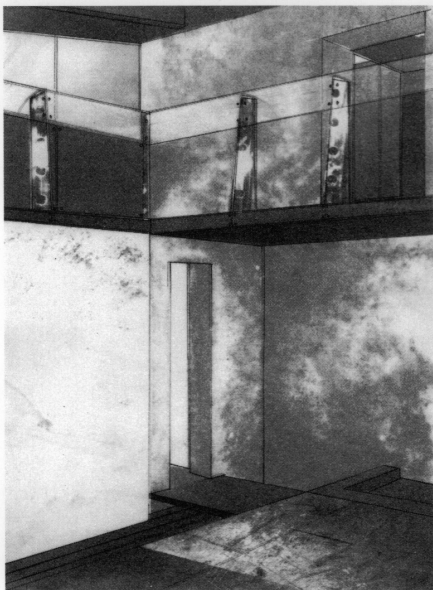
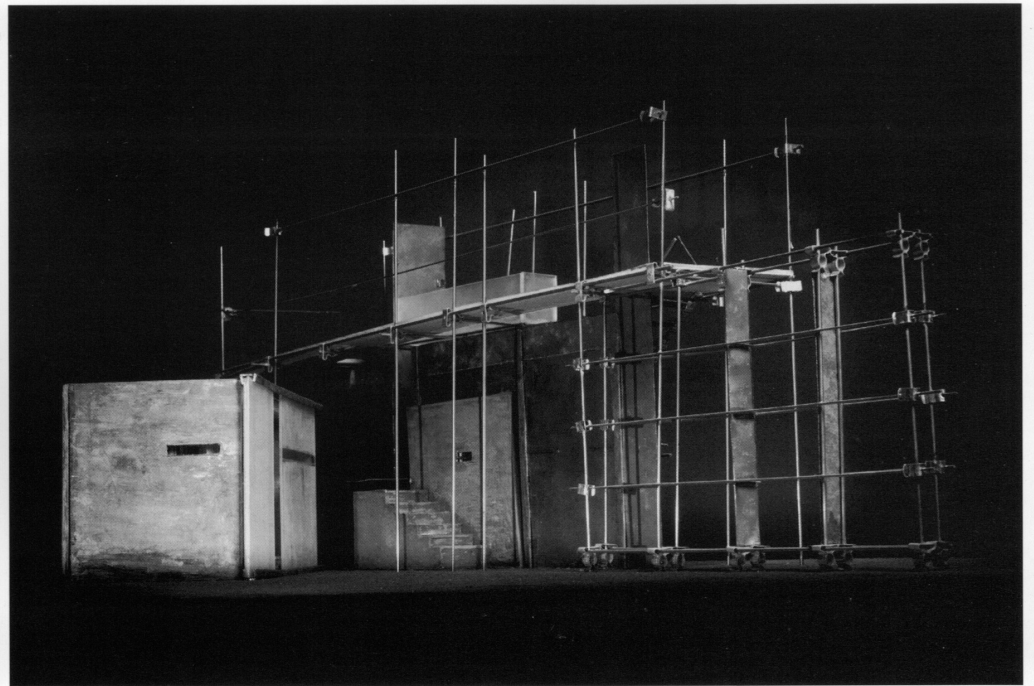
Triplos Studio 5

The interrelationships between city, house, and garden are recurring themes in the history of European architecture. During the Renaissance, these themes were represented by the union of ideal city and paradise, and were embodied in the terrestrial paradise of the Renaissance garden. The relationship between paradise and the ideal city may be understood by remembering that the natural harmony which once existed in the Garden of Eden was lost to humankind upon expulsion from Paradise, and was replaced by cities and organized societies. The desire to create an ideal city is akin to setting the perfect stage upon which to act out (if not actually live), a virtuous existence. However, the real city has been perceived antithetically as the realm of vice, greed,

ambition, crime, noise and dirt. The impossibility of creating and sustaining an ideal city leads one to attempt to do so in the ideal setting of a garden. These issues were explored by Studio 5 through two projects this year.

The Bunkerhouse - Michaelmas Term

The Bunkerhouse involved the design of an urban retreat on a World War II pill-box in Sussex. Situated by a river, the pill-boxes have massive metre thick walls with space inside for six gunners. Each student was responsible for the inspiration of the brief and it did not take long to discover the latent possibilities of abandoned war buildings in the bucolic setting of Sussex. The project focused on materials and construc-



Top left: Acupuncture Retreat collage, Jo Walker
Bottom left: Waterhouse, Melanie Jacobsen

Top right: Legume Research Station - model, Josh Bolchover
Bottom right: Retreat for Alice in Wonderland and St. George, Jessica Lumley

tion and the designs were manifest in 1:20 models and drawings, with larger scale construction details.

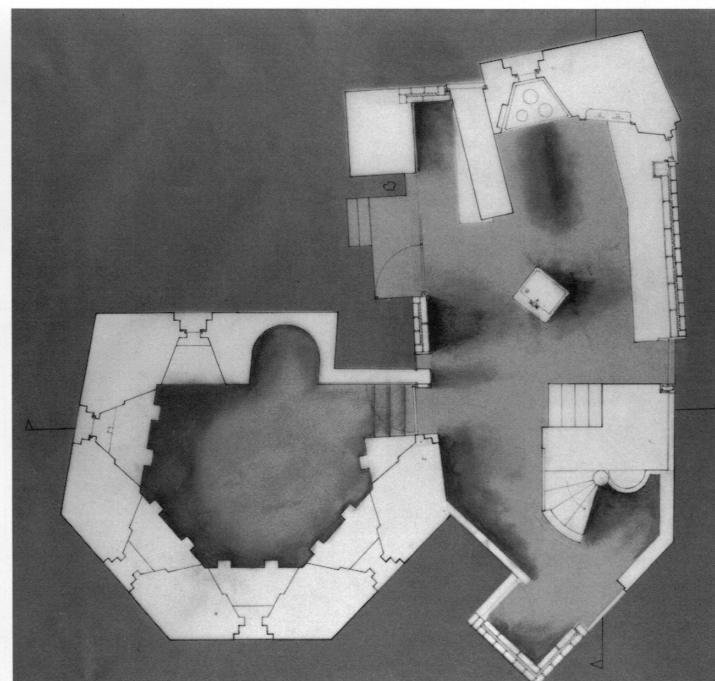
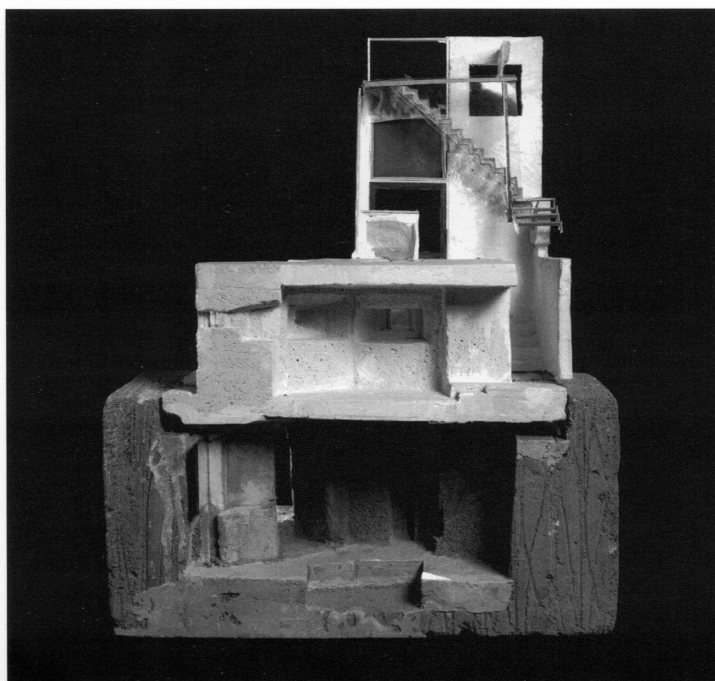
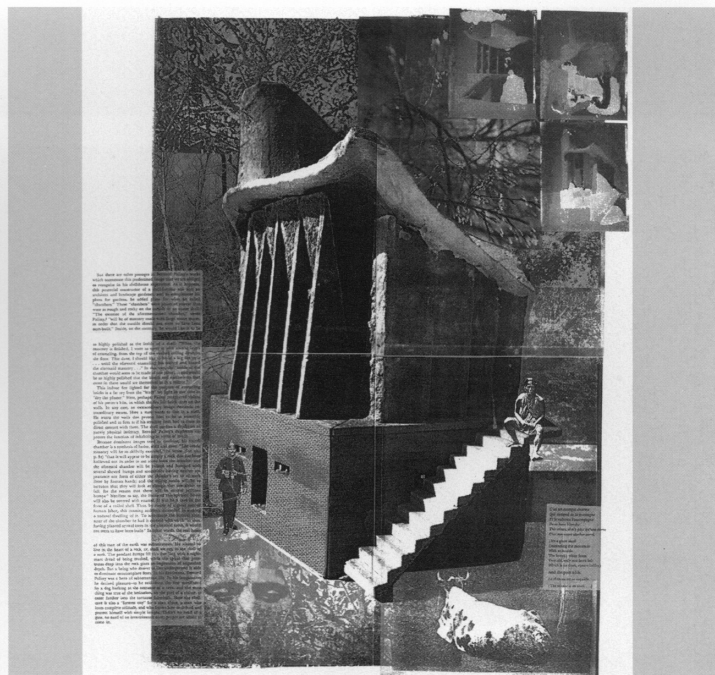
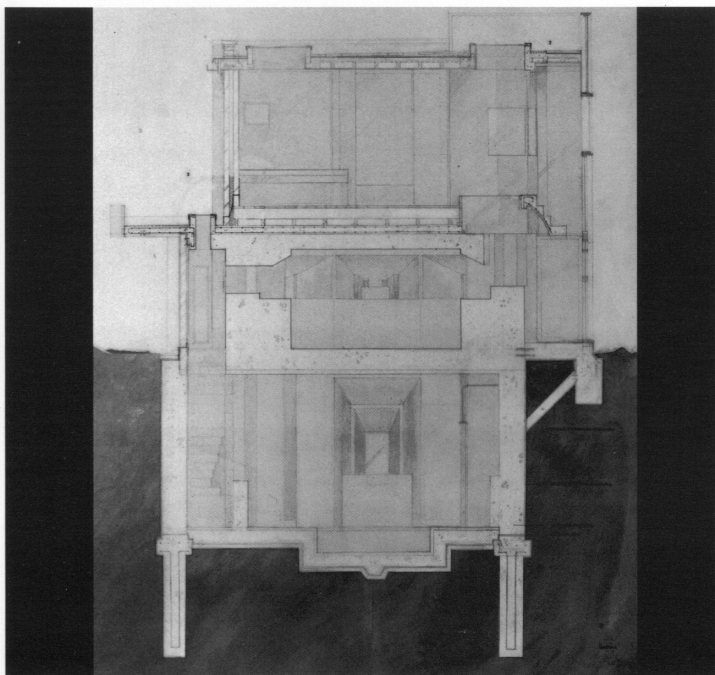
The Cultural Exchange - Lent and Easter Terms There are a number of societies in Cambridge and the University such as the Afro-Caribbean, Bangladesh, and Chinese Society, etc. that are based on culture and nationality. They have been formed to retain and celebrate a sense of cultural identity while also finding common ground through participating as a larger community. Each student developed his or her own brief from a given springboard brief. There was a choice of two sites in Cambridge; allowing for an emphasis of town or gown, or both. Many of the designs involved such

spaces as meeting rooms for discussion and debate, theatre for drama, film, and performance, seminar rooms, a library and reading room, a bar, cafe and other social spaces. In some, textual tradition was explored in the spoken, written, and sung word. Others developed the project as a way of taking culture into the body through the different ways and meanings of food preparation and consumption. The building was seen as the stage or theatre of cultural exchange for such activities as the representation of myth and the re-enactment of ritual through drama, dance, story-telling, and music; as played out in the public spaces of theatre, dining hall, market-place, cafe and garden.

STAFF: Lorna McNeur with Robin Hill (Michaelmas Term) and Katrina Simon (Lent and Easter Terms).

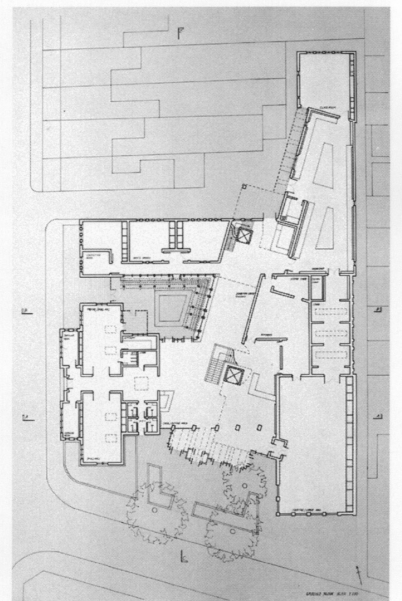
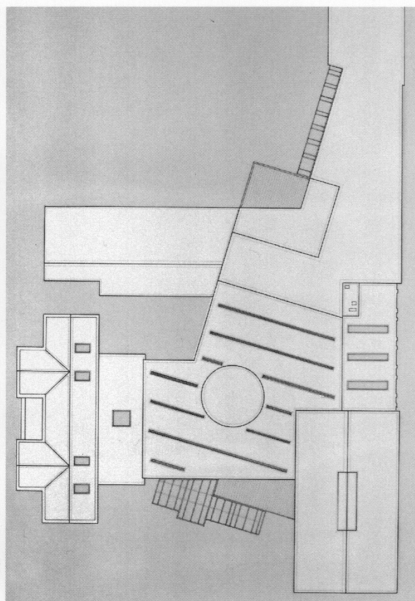
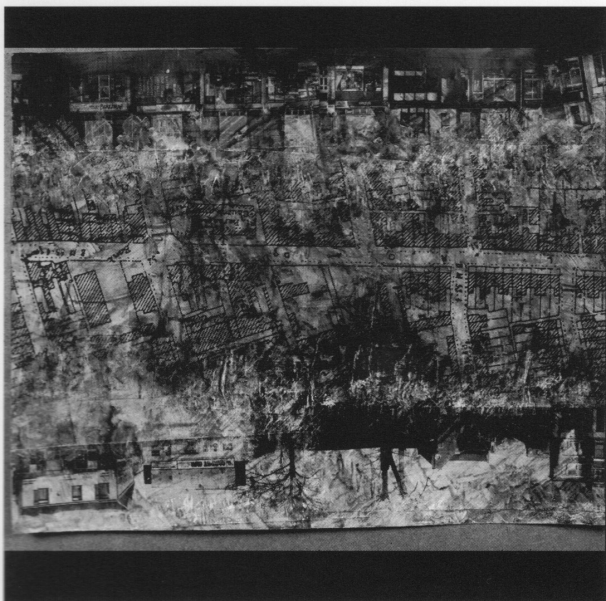
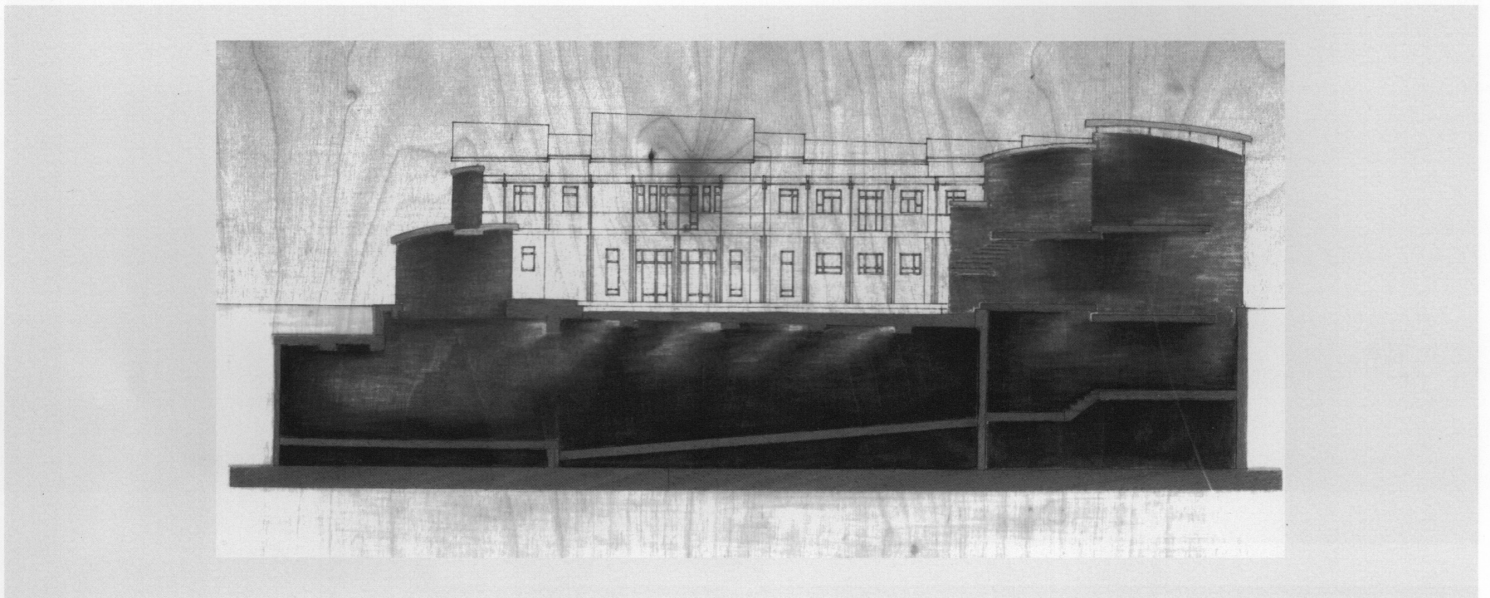
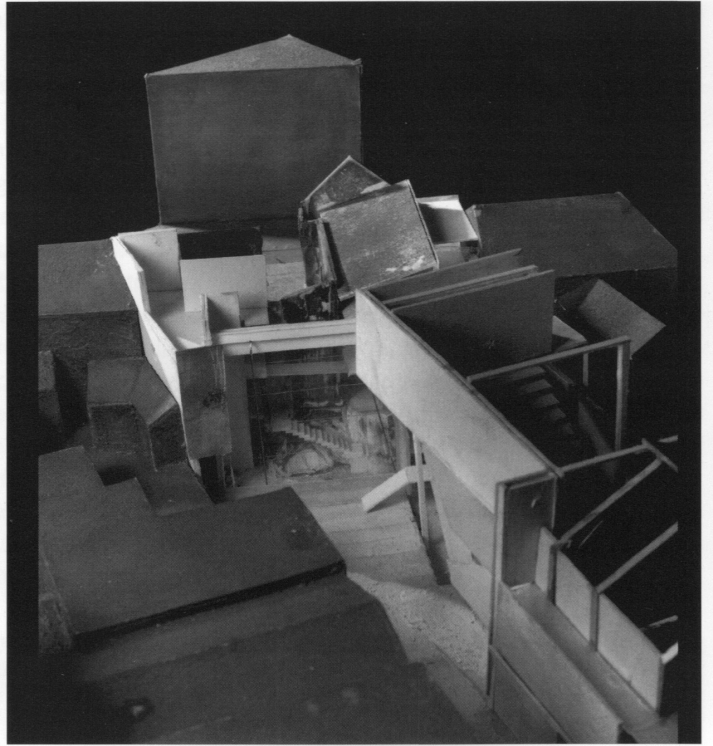
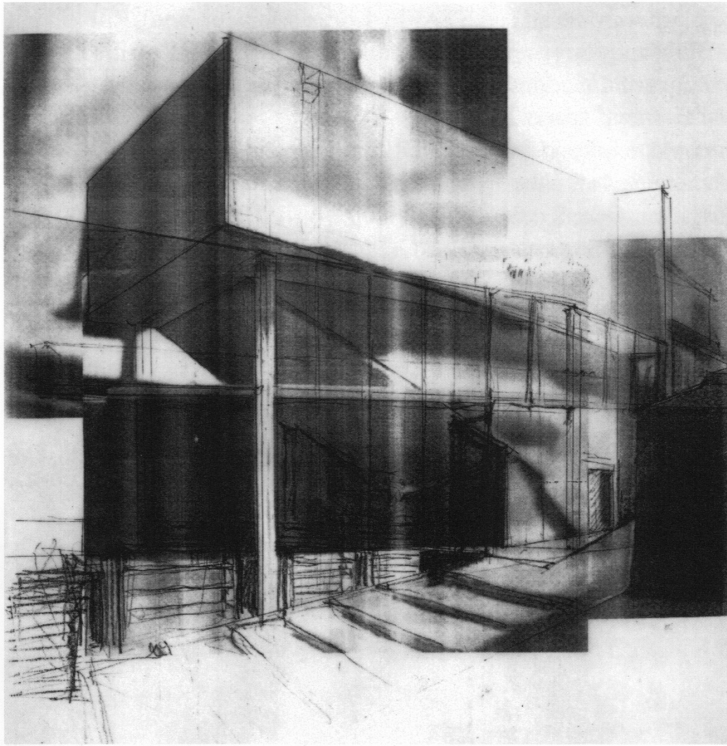
STUDENTS: Second Year: Adela Askandar, Mischa Brearly, Tristan Crawford, Aidan Crawshaw, Will Haggard, Jo Walker; Third Year: Josh Bolchover, Tanya Brown, Melanie Jacobsen, Jessica Lumley, Helen Maudslay, Stephen McHale, Philipp Misselwitz, Ingrid Schroder.

THANKS TO: Peter Carl, Amy Catania, Paul Kirby, Perry Kulper, Neil Leach, Eric Parry, Jane Rendel, Alexandra Stara, Koen Steemers, Dalibor Vesely, Sarah Wigglesworth, Peter Wooley, Wendy Pullan, Rik Nys, Jane Thompson.



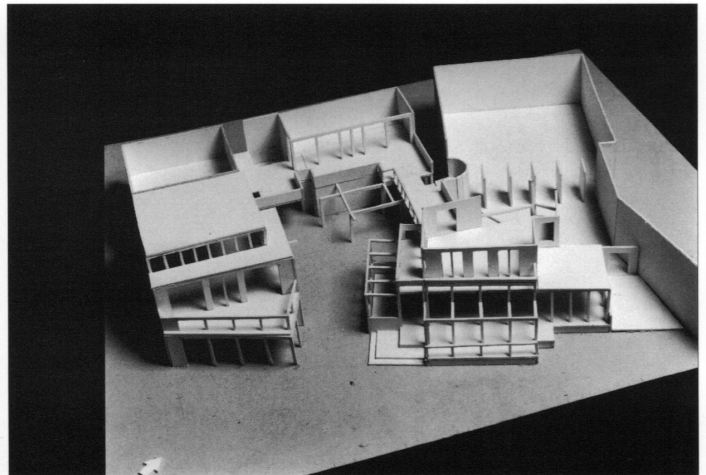
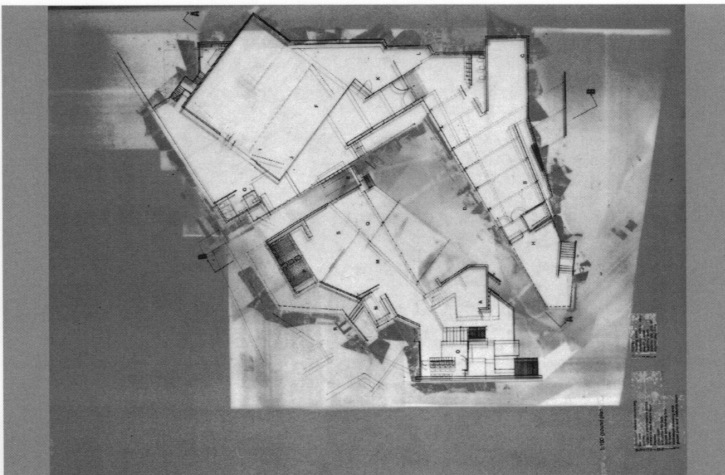
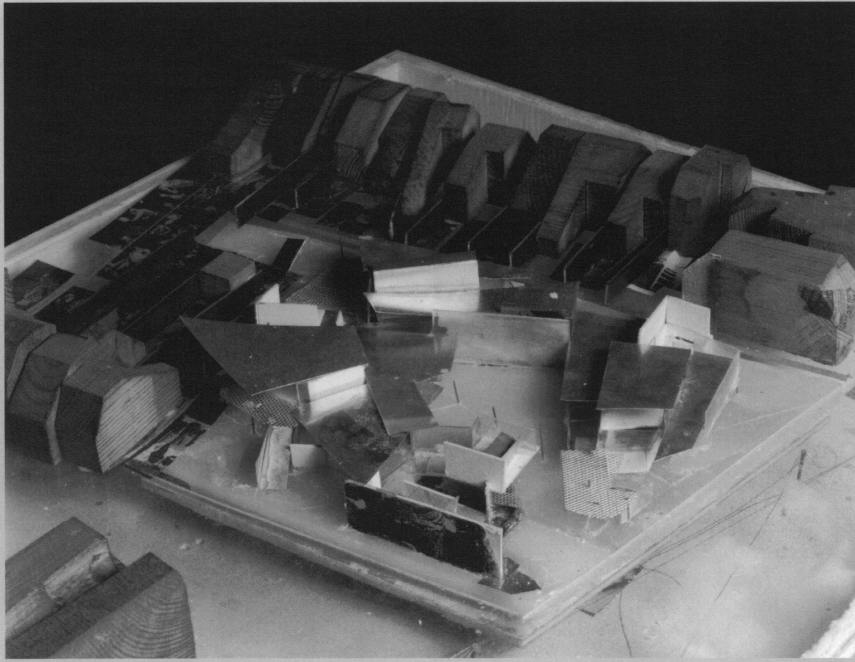
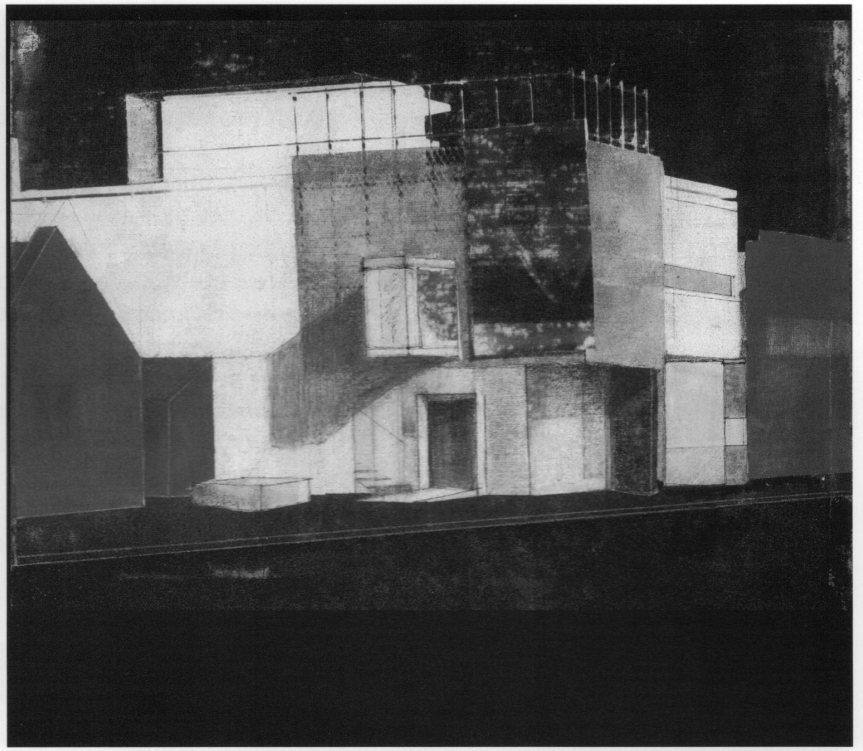
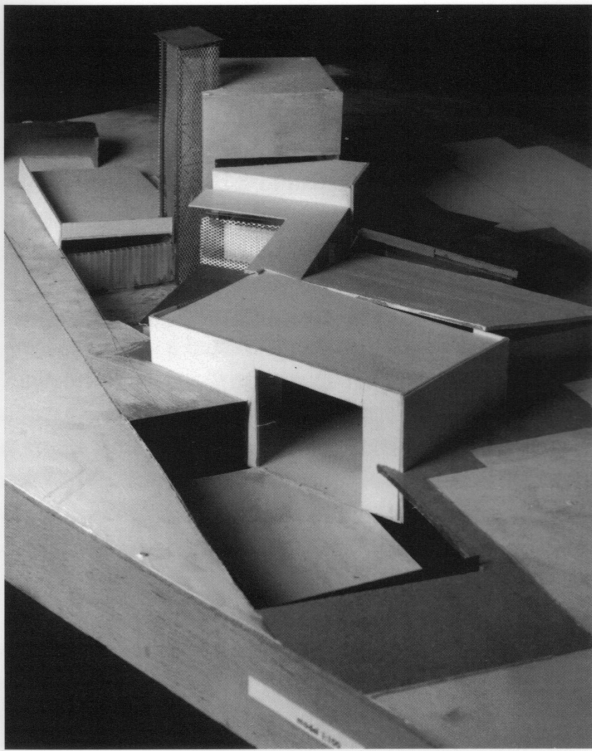
Top left: Retreat for a poetess - section, Adela Askandar
Bottom left: Retreat for a poetess - model, Adela Askandar

Top right: Bunkerhouse Temple - collage, Mischa Brearly
Bottom right: Retreat of Daily Ritual - plan, Aidan Crawshaw



Top left/right: Kinema - Theatre/Café perspective and model, Philip Misselwitz
 Middle: Student Union Building, Section of Theatre/Court, Helen Maudslay
 Bottom left: Mill Road Site analysis painting, William Haggard

Bottom right: Community Centre, two plans, roof and ground, Tanya Brown



Top left: Cabaret/Theatre, model, Ingrid Schröder
Top right: Theatre/Nightclub perspective, Stephen McHale

Middle and bottom left: Cambridge Dance Centre, model and plan, Jo Walker
Bottom right: University Society Centre, model, Tristan Crawford